

International field workshop on the Precambrian evolution of Korea, and East Asian tectonics (19–24 September, 2011)

**Jointly organized by the Korean Basic Science Institute,
Korea Institute of Geoscience and Mineral Resources,
School of Earth and Environmental Sciences, Seoul National University,
Petrological Society of Korea, and
International Precambrian Research Centre of China**

First Circular

Itinerary for 19 to 24 September, 2011

- One day for Icebreak; One and half days for Workshop; 3 days for Field Excursion

Welcome Party:

- 19 September (Mon.) at Hotel Ramada Plaza Cheongju

Scientific Sessions for the Workshop:

- 20 September (Tue.) to 21 September (Wed.) morning at Conference Hall, Korea Basic Science Institute (KBSI) Ochang Center, Korea. The KBSI SHRIMP IIe is housed at the Ochang Center (please see the photos below).
- Ochang is a newly developed science town, located in the middle of South Korea, and three hours away by public transportation from Incheon International airport.
- Several flights serve from China, Japan, and Hong Kong to the Cheongju International airport, which is only a few tens of minutes driving distance from the KBSI Ochang center.



Field Excursion: 21 September (Wed.) afternoon to 24 September (Sat.) morning

- Neoproterozoic meta-sedimentary and -volcanic rocks, Ogcheon Belt
- 1.93 Ga granitoid gneisses and 1.87 Ga high-grade gneisses, Yeongnam Massif
- 1.87 Ga granulite complex, Hwacheon-Inje, Gyeonggi Massif
- Neoproterozoic supracrustal schists and amphibolites in the Gyeonggi Massif
- Triassic reactivation of the basement gneisses

Registration Fee (Provisional):

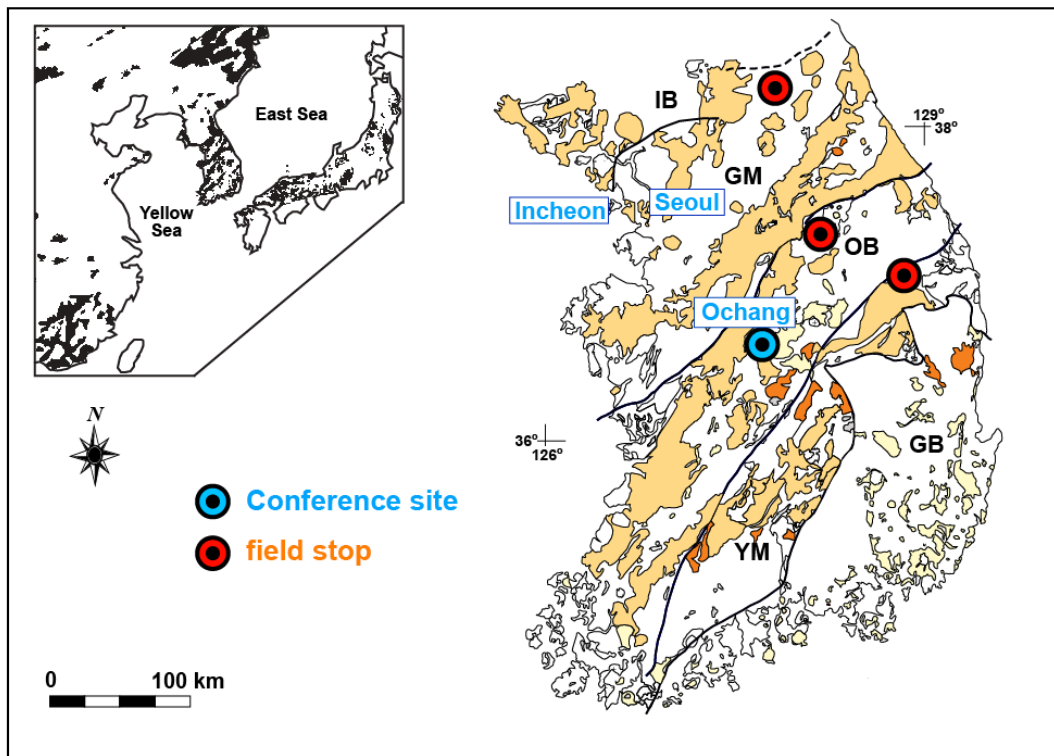
US \$700 per person, including meal, lodging (double occupancy, extra charges for single occupancy will be less than US \$ 200) and transportation during the workshop and field excursion. External sponsorship will be sought for covering extra expenses. Depending on the amount of external financial support, the registration fee could be slightly adjusted.

Number of Participants:

More than 20 foreign participants from more than five countries (excluding Korean participants) are expected. For field excursion, there might be a limitation in the number of participants which will be announced in the second circular.

Contacts and correspondence to secretariat:

Namhoon KIM, KBSI at nhkim@kbsi.re.kr



Distribution of Phanerozoic granitoids in South Korea